

A1700 Alpha⁰

CT Metering



The Power to Change...

Features

- CT & CT/VT operated
- Comprehensive tariff structure
- 2 line dot matrix multi-lingual display
- Instantaneous instrumentation values
- Plug-in modules for extended functionality
- Communications via optical port or communications module
- 450 days of load profile data
- Internal clock and calendar with battery back-up
- Concealed utility/reset pushbutton
- 2 or 3 element availability
- Accuracy Class 0.2s, 0.5s, 1 or 2
- High security design

Options

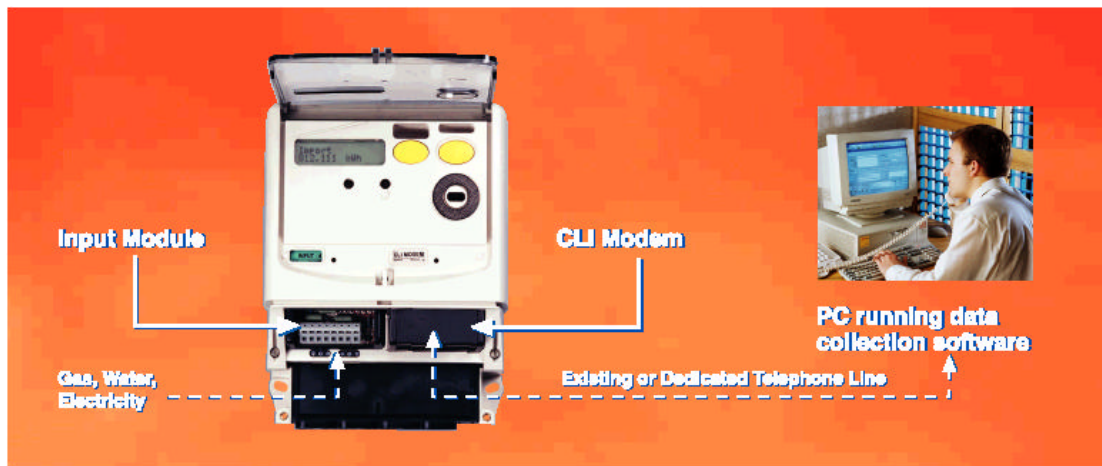
- 4 relay outputs
- Range of interchangeable input/output and communications modules
- 900 days load profile data
- Data stream communications mode

The A1700 offers outstanding measurement and complex tariff capabilities for use in both industrial and commercial CT and CT/VT operated applications.

The meter features include a fully programmable customer defined display and load profile data storage for up to 900 days. Local communications is via a standard IEC optical port. The meter can operate as a stand alone unit or as part of a comprehensive metering system.

The functionality of the meter can be increased by installing additional modules. Communications modules can be RS232 or RS485. A range of PSTN, or a GSM modem plug into the module directly under the meter terminal cover. An input module provides the ideal solution for multi-utility metering. Alternatively an output module increases the number of relays from four to eight. WindowsTM 'Power Master Unit' software programs or reads the meter data.

The CT meter can be supplied to meet accuracy Class 0.2s, 0.5s, Class 1 or Class 2 and is fully compliant to EMC regulations EN50081-1 and EN 50082-1.



Measured Quantities

kWh total import/export
 kvarh lagging import/export
 kvarh leading import/export
 kVAh
 3 customer defined registers -
 derived from measured quantities
 4 inputs for external meters (if fitted)

Tariff Structure

32 Time of use registers
 8 Maximum demand registers
 12 Seasons
 24 Season changeover dates
 96 Switching times
 64 Exclusion dates

Programmable deferred tariff

Data Storage

450 or 900 days of half hour data for one channel
 Programmable integration period
 Load profile storage for any measured quantity
 12 sets of historical data

Display

2 line 16 character dot matrix liquid crystal display
 Wide viewing angle
 Fully customer defined, multilingual

Communications

Local: IEC 62056-21 (formally IEC 61107)
 Remote: Interchangeable modules (RS232, RS485 or customer specific)

Measurement

Accuracy class: Class 0.2s, 0.5s, 1 or 2

Ratings

Voltage range: 57.5 - 240V (3ph 4wire)
 100 - 415V (3ph 3wire)

Max. current (I_{max}): 10A
 Standard current (I_n): 1, 2, 5A

Other voltage and current values are available.
 Contact Elster Metering Systems

Frequency: 50Hz or 60Hz

Temperature:

Operating: -20°C to +55°C

Storage: -25°C to +70°C

Case & Dimensions

Sealed flip-up lid:

- Conceals utility/reset pushbutton
- Provides for customers own information to be securely added to the nameplate
- Allows visual identification of modules fitted

279mm(high) x 170mm(wide) x 81mm(deep)

Weight: 1.5kg

Approvals

IEC 61036, IEC 60687, IEC 61268

Compliant to EMC regulations

EN 50081-1, EN 50082-1



Elster Metering Systems

Oulton Road
 Stone, Staffordshire
 ST15 0RS
 Tel: +44 (0) 1785 812111
 Fax: +44 (0) 1785 818804
 www.elstermetering.com

The company's policy is one of continuous product improvement and the right is reserved to modify the specification contained herein without notice.